

Manufactured by



ADOBELITE Manufacturing Division
10031 Southern SE Albq. NM 87123
Ph. 505-291-0500 Fax 505-291-9317
www.adobelite.com

EL PUEBLO FIREPLACE

Prefabricated Masonry & Metal

Installation Instructions and Operation

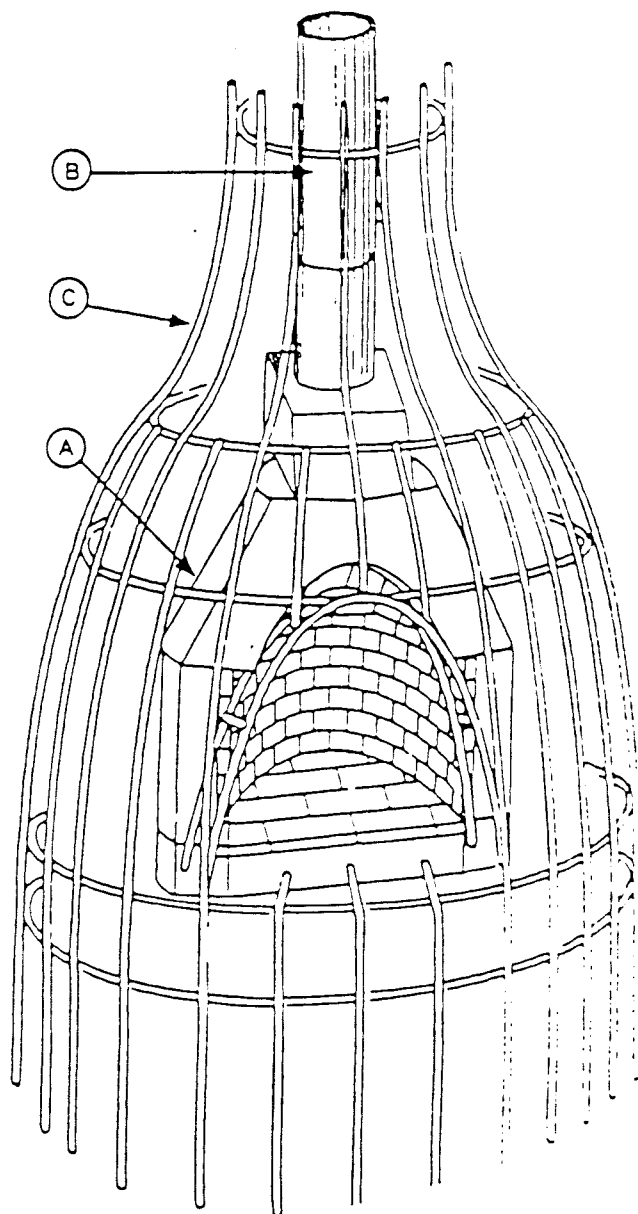
Keep these instructions for future use.

This fireplace to be installed **ONLY** by a construction industry licensed contractor, or an installer certified by Adobelite, LLC. Any permits and construction industry inspections required for installation should be obtained by this contractor.

A) KIVA FIREBOX STRUCTURE is made of three pre-cast components consisting of firebrick and lightweight concrete.

B) MASONRY AND CERAMIC TILE CHIMNEY Pre-cast masonry and ceramic tile firebox cap constitutes entire chimney system for the outdoor El Pueblo kiva. Because the El Pueblo II's frame height is higher than the EPI, an additional 8" ceramic chimney section is required (shown at right).

C) EXTERIOR FIREPLACE FACE is fabricated of a tubular steel and diamond-mesh frame mounted to and housing the firebox. This frame is finished with three coats of stucco after installation.



NOTE: All *warnings* are outlined in this manual and must be adhered to by the installer and the buyer. Failure to do so will nullify the manufacturer's warranty, and may cause serious fire hazard.



TABLE OF CONTENTS

Firebox Installation Procedure	3
' Layout—Corner & Free-Standing Installations	3
Base Pedestal	3
Base Installation	3
Center Section Installation	3
Top Installation	3
Chimney Installation	4
Exterior Fireplace Frame Firebox Attachement	4
Exterior Fireplace Frame and Finishing	4
Corner Installation	4
Free-Standing Fireplace	4
Door Frame Installation	5
Finishing Kiva Façade Frame	5
Ceramic Gas Log Conversion	5

LIST OF FIGURES

FIG 1	base installation—plan, corner	3
FIG 2	base pedestal—plan, corner	3
FIG 3	firebox sections labelled	3
FIG 4	mesh attachment	4
FIG 5	drain tube	4
FIG 6	door frame	5
FIG 7	drain tube—opening section and detail	5



FIREBOX INSTALLATION PROCEDURE

If your patio does not have a finished floor, a 4" (minimum) concrete slab the size of the fireplace footprint should be poured to accommodate the El Pueblo.

1. Layout

Corner Installation

If the fireplace will be installed in a corner against a 5' or 6' high cement block wall, start at the base of the inside corner and measure out 3'6" from the corner on each wall, then drive a cement nail, angled down into the bottom mortar joint next to the slab or ground. Secure a soft wire around the nail, then draw a radius from both walls to establish a center line. (See FIG. 1)

To establish front of firebox base, make a mark on the center line 3'1" out from the corner. With a carpenter's square draw a perpendicular line 1' out from this mark on both sides of the line.

Free-Standing

To establish the layout for a free-standing fireplace, you must measure from the center of the frame. The face of the firebox is 1'1" out from the center; the assembled frame requires a circular area with a 4' diameter.

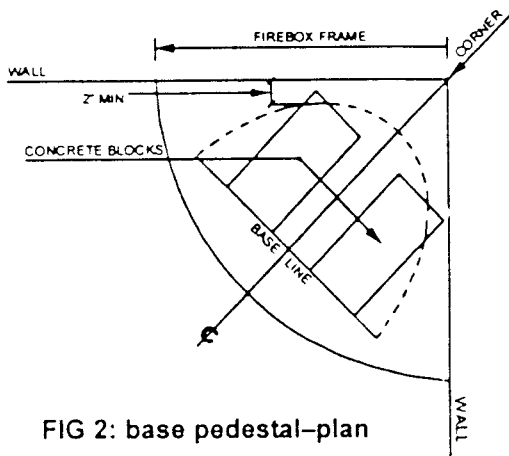


FIG 2: base pedestal-plan

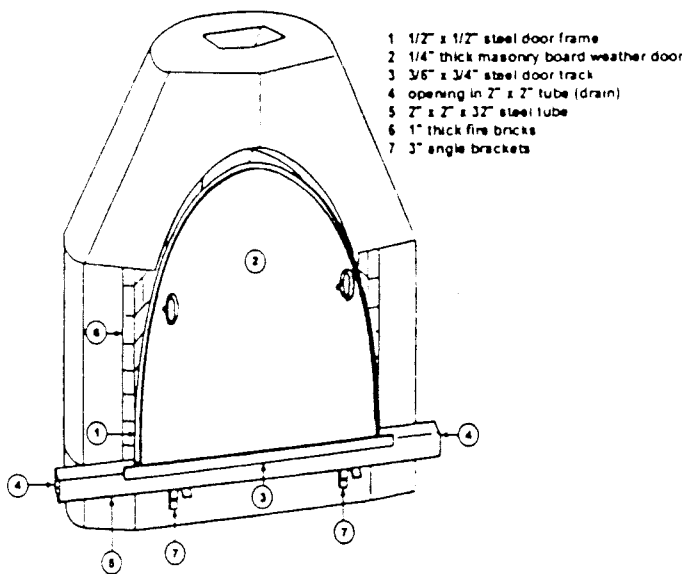


FIG 3: firebox sections

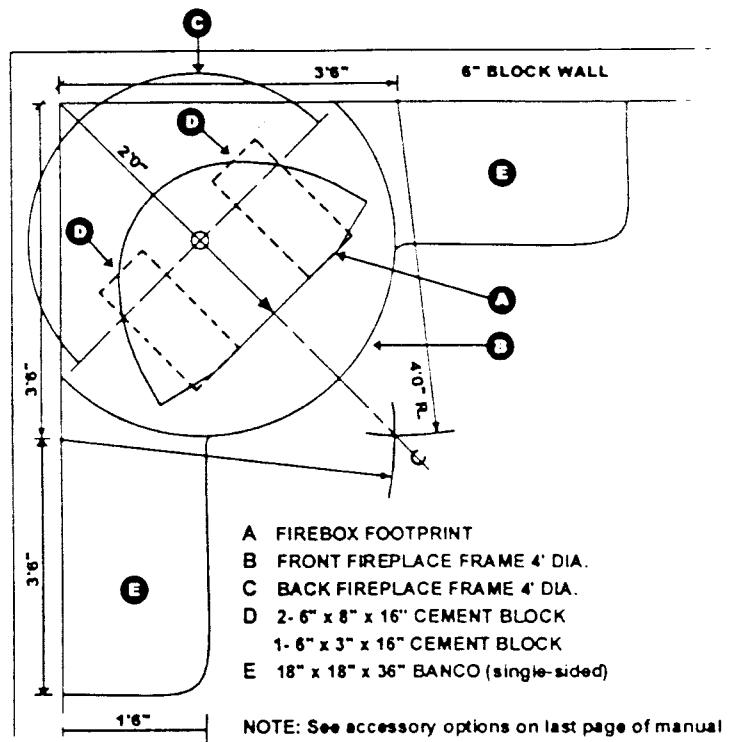


FIG 1: base installation-plan

2. Base Pedestal

Place one 8"x8"x16" cement block 6" off center, lined up with the front firebox line, as illustrated in FIG. 2. Use mortar or mastic to adhere the block to the patio. Repeat procedure on other side of center line. Next, mortar a 4"x8"x16" block on top of the first to obtain the necessary height for the fireplace frame opening. Note: The fireplace frame height can be lowered by removing one or both concrete blocks and shortening the frame from the bottom, equal to the number of inches removed.

3. Base Installation

Apply a thin coat of liquid nails adhesive or mastic on top of cement blocks, place base on top of blocks, and line up the front of the base with the base line on the floor. Using a carpenter's square, line up both marked center lines on the base front and back to the center line on the floor. Level the base and realign to center line and firebox line.

4. Center Section Installation

Place the center section on the base, lining up the back and sides. Draw a line on the base on the interior of the brick curve, then remove the center section. Apply refractory mortar out from the line of the outside edge of the base. Now reset the center section and place in position, aligning it with the back and sides of the base. Remove any excess mortar or add mortar as needed to fill voids.

5. Top Installation

Apply refractory mortar to the top of the center section, then follow the same procedure as described above for the center section.

NOTE: Gas log lighter can be installed during firebox installation.

CHIMNEY INSTALLATION

The pre-cast masonry and ceramic chimney, which has been provided, is the only chimney system necessary for installation of an El Pueblo. To install, spread refractory mortar on top of the firebox and set the cap on top, centering and lining up the front of the cap with the front of the firebox. Remove any excess mortar and fill any gaps.

For the El Pueblo II, which has a higher frame, an additional ceramic chimney section has been included. To install this section, spread refractory mortar atop the ceramic chimney section you have already installed. Now set the additional section on top. The chimney will be adequately secured when the frame has been placed and stuccoed.

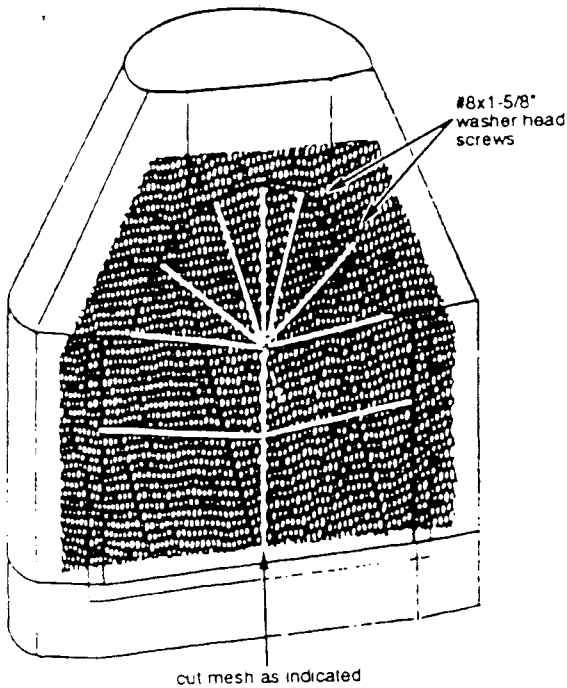


FIG 4: mesh attachment

EXTERIOR FIREPLACE FRAME FIREBOX ATTACHMENT

A piece of metal diamond mesh should be cut to cover the entire opening of the firebox and screwed in place with the #8 washer-head screws provided. The screws should be placed about every 3" apart and screwed into the concrete (not the refractory bricks). When secured, cut the mesh as indicated in FIG. 4, starting with the center line. When the fireplace frame is installed, these sections are to be pulled through the arch opening and secured to the frame with #6x1/2" self-drilling screws.

Another piece of metal lath 28"x12" is to be attached to the face of the drain tube with #6x1/2" self-drilling screws. Once the mesh is in place it should be folded back, then the drain tube should be mounted to the firebox through the "L" brackets with the washer head screws. The mesh will be attached to the hearth when the fireplace frame is installed.

EXTERIOR FIREPLACE FRAME & FINISHING

Corner Installation

1. For corner installations, the front and back frame sections should be secured only at the top. For the back frame section, measure up from the floor the height of the wall plus 2": mark the back frame section that corresponds to this height, then remove the frame from this line down. The extraneous mesh and tubing can be easily removed with a circular saw fitted with a metal cutting blade.
2. Lift the entire frame over the firebox and lower to the back wall corner and the floor. Push the front frame section into the corner as far as possible. Measure out from the corner to the face of the frame, and adjust until distance is equal. Attach the frame to the wall by securing the mesh to the block wall with cement nails. Cut the excess mesh, leaving about 1" overhang. Fold the overhanging mesh back onto the frame face. On the back side of the frame, cut a 12" wide strip of mesh to attach to the entire back of the frame and the top of the block.
3. At the firebox opening, pull the mesh that is attached to the drain tube to the frame face at the bottom of the opening. Then pull the mesh from the center firebox section and secure to the frame arch opening.
4. Fold the excess mesh at the chimney top down into the opening. To achieve the proper shape for the El Pueblo II, round the mesh on the top of the El Pueblo II model. Now the frame is ready to be stuccoed.

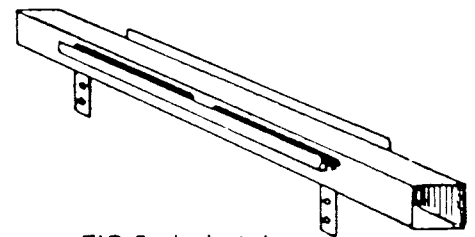


FIG 5: drain tube

Free-Standing Fireplace

For a free-standing fireplace, you will need to connect the two halves of the frame: to do this, fold back the mesh on the sides and slide the horizontal tubes together. Fold the mesh back over the frame and attach to the tubes with 1/2" self-drilling screws (provided). Cut any excess mesh away. To finish, follow numbers 3 and 4 from the 'Corner Installation' instructions above.

NOTE: If bancos will be installed, they should be attached before any stucco is applied.

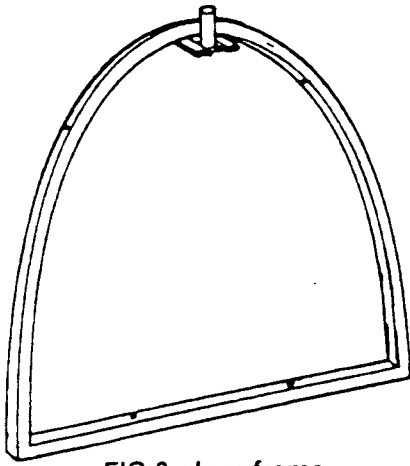


FIG 6: door frame

DOOR FRAME INSTALLATION

A steel kiva arched door frame is included with all kiva fireboxes. This frame is to be mounted after the kiva facade has been installed. The door frame is then installed by first centering the door frame in the arch opening 1/2" behind the metal strip at the front of the drain tube. Attach the door frame with the 1" black self-drilling screws provided. Next, the door frame should be plumbed. If the door latch at the top of the frame is prohibiting the installation, remove the latch by removing the two mountings screws. When the frame is in the proper position, insert the two butterfly bolts through the mesh and tighten in place.

Remount the door latch. If mesh is obstructing installation, make a hole in the mesh large enough to allow the latch to be mounted. When the stucco coats are applied to the kiva facade, the stucco around the door frame opening should be filled only up to the outside edge of the frame. If it is overfilled it will obstruct the door installation.

If a weather door will be installed, it should now be placed in the base track and pushed into place until it is held by the snap latch. The latch can be raised or lowered for a proper fit.

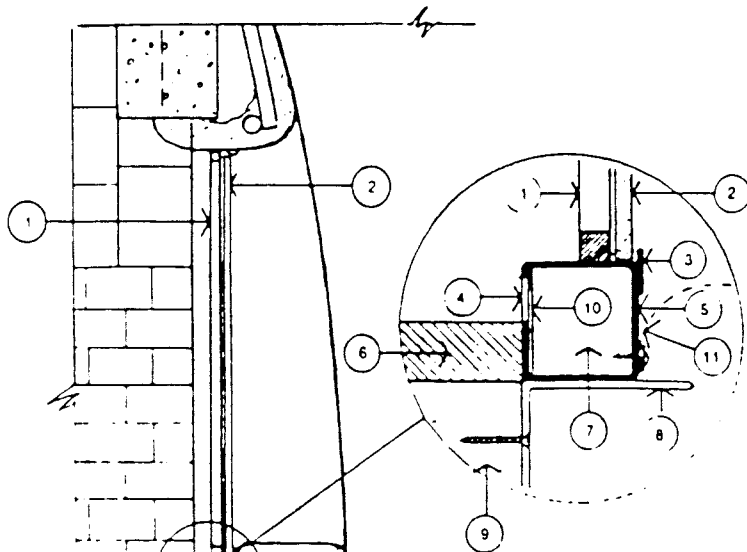
FINISHING KIVA FAÇADE FRAME

1. First apply marriage seam mixture (supplied) on the mesh between the backside of the doorframe and the firebox. (Refer to marriage seam instructions provided with the marriage seam.)
2. The entire exterior should be stuccoed with two coats of fibered "one-coat stucco". The finish coat can be any exterior stucco product.

CERAMIC GAS LOG CONVERSION

This provision for installation of gas pipe is intended for connection to a decorative gas appliance that incorporates an automatic shutoff device and complies with the Standard for Decorative Gas Appliances for Installation in Vented Fireplaces, ANSI Z21.60. The decorative gas appliance must be installed in accordance with the National Fuel Gas Code, ANSI Z223.1

FOLLOW THE INSTALLATION MANUAL PROVIDED BY THE CERAMIC GAS LOG MANUFACTURER.



- 1 1/2" x 1/2" steel door frame
- 2 1/4" thick masonry board weather door
- 3 3/16" x 3/4" steel door track
- 4 opening in 2" x 2" drain tube
- 5 2" x 2" x 32" steel tube
- 6 1" thick firebricks
- 7 tube open on both ends
- 8 2-3" angle brackets
- 9 vermiculite concrete
- 10 ash prevention screen
- 11 diamond lath

FIG 7: drain tube - opening section & detail